

# Table of Contents

<b>Weird USB Bluetooth Music receivers .....</b>	<b>2</b>
--	----------

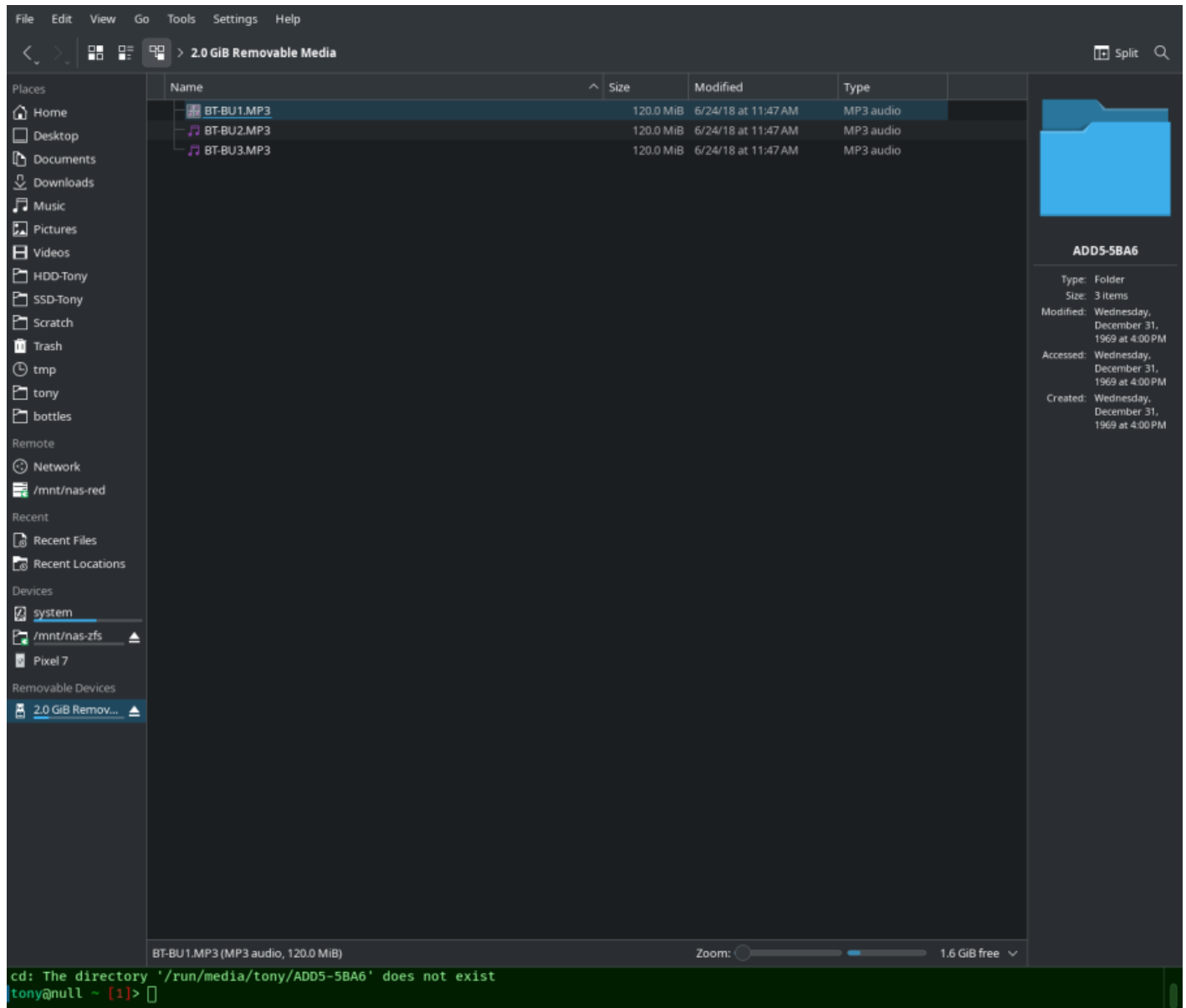
# Weird USB Bluetooth Music receivers

My USB powered bluetooth audio receiver STARTED SHOWING UP AS A MASS STORAGE device.

I DIDN'T EVEN KNOW THAT THING HAD DATA LINES?!?

Did I get rubber-duckied by a BLUETOOTH RECEIVER?

WAIT YOU CAN MOUNT THE STORAGE DEVICE?!?



WTF IF YOU PLAY IT, THE FILE HAS LEGIT MP3 TAGS

```

File Edit View Bookmarks Plugins Settings Help
tony@null ~> ls -lah /run/media/tony/ADD5-5BA6/
total 361M
drwxr-xr-x  2 tony tony  32K Dec 31  1969 ./
drwxr-xr-x+ 3 root root   60 Jul  7 15:02 ../
-r--r--r--  1 tony tony 120M Jun 24  2018 BT-BU1.MP3
-r--r--r--  1 tony tony 120M Jun 24  2018 BT-BU2.MP3
-r--r--r--  1 tony tony 120M Jun 24  2018 BT-BU3.MP3
tony@null ~> mpv /run/media/tony/ADD5-5BA6/BT-BU1.MP3
[ffmpeg/demuxer] mp3: Estimating duration from bitrate, this may be inaccurate
(+) Audio --aid=1 (mp2 2ch 48000Hz)
File tags:
Artist: btdongle
Album: bt dongle
Date: 2019
Title: BT MUSIC1
AO: [pipewire] 48000Hz stereo 2ch s16p
A: 00:00:00 / 01:14:53 (0%)
Exiting... (End of file)
tony@null ~> mpv /run/media/tony/ADD5-5BA6/BT-BU1.MP3

```

```

File Edit View Bookmarks Plugins Settings Help
libavcodec      61.  3.100 / 61.  3.100
libavformat     61.  1.100 / 61.  1.100
libavdevice     61.  1.100 / 61.  1.100
libavfilter     10.  1.100 / 10.  1.100
libswscale      8.   1.100 / 8.   1.100
libswresample   5.   1.100 / 5.   1.100
libpostproc     58.  1.100 / 58.  1.100
[mp3 @ 0x77b664000c80] Estimating duration from bitrate, this may be inaccurate
Input #0, mp3, from '/run/media/tony/ADD5-5BA6/BT-BU1.MP3':
Metadata:
  title       : BT MUSIC1
  album       : bt dongle
  artist      : btdongle
  date        : 2019
Duration: 01:14:53.88, start: 0.000000, bitrate: 224 kb/s
Stream #0:0: Audio: mp2 (mp3float), 48000 Hz, stereo, fltp, 224 kb/s
^C
tony@null ~ [123]>

```

OH SHIT I Think this is for it to work on crappy stereos that just play MP3 from a flash drive!!!

To adapt them to work with bluetooth

hm I don't hear anything and the mp3 file exits though

so I guess you need a dumber player that doesn't try to seek in a file

WAIT I THINK I KNOW WHAT THE OTHER FILES ARE

YOU CAN'T PLAY THEM, BUT IF YOU OPEN IT, IT TELLS THE PHONE TO GO TO THE NEXT SONG

so it's used to detect when you pressed previous/next!!! and from that, it signals to the bluetooth device

to go back/forward

who the f\*\*\* makes this ASIC?!? There's no way this thing is economies of scale

From:

<https://wiki.tonytascioglu.com/> - **Tony Tascioglu Wiki**

Permanent link:

[https://wiki.tonytascioglu.com/articles/weird\\_usb\\_bluetooth\\_music\\_receivers?rev=1720390722](https://wiki.tonytascioglu.com/articles/weird_usb_bluetooth_music_receivers?rev=1720390722)

Last update: **2024-07-07 22:18**

